

ACCESSING THE COMMAND CENTER

-Print out a status page from the machine

(System Menu->Report->Report Print->Status Page)

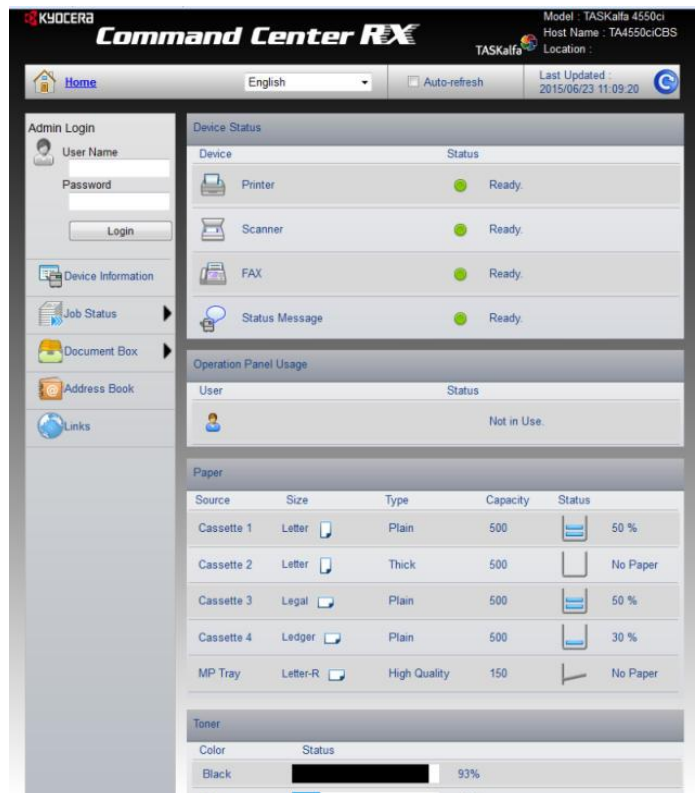
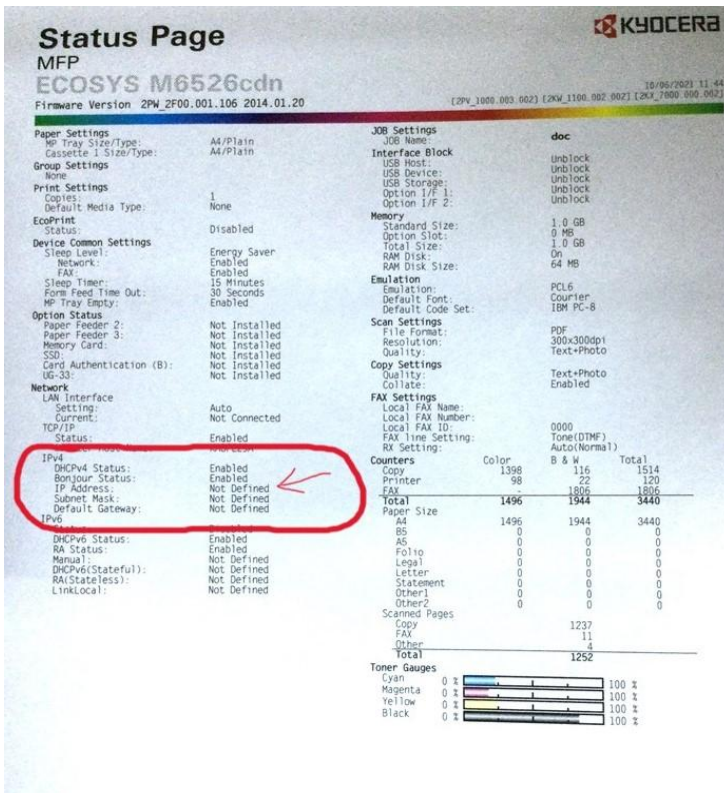
-On the Status Page, find the network section. It will list out an IP address under the IPv4 settings.

-Type the IP address directly into the URL of a web browser(preferably Microsoft Edge)

-Advanced-> Proceed to IP address

-Login in to the Command Center using Admin login

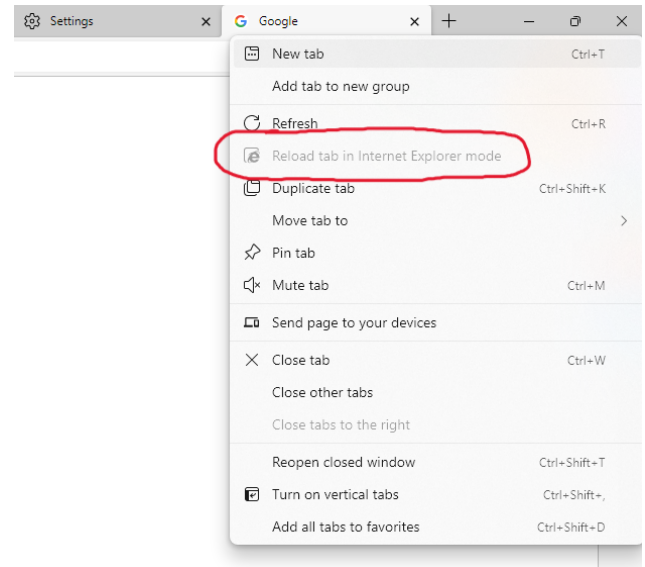
(Username/Password - Admin/Admin)



Accessing the Command Center on a 1 series machine

Load the IP address as Internet Explorer

- Go to Microsoft Edge Browser settings
- Default Browser tab
- Let IE open sites in Microsoft Edge ->Always
- Allow sites to be reloaded in IE mode -> Allow
- Reload Microsoft Edge once settings have been applied
- Input IP address into URL
- Right Click on the open tab, or click the settings icon and reload tab in Internet Explorer mode

A screenshot of the Microsoft Edge Settings application. The left sidebar shows the 'Settings' menu with 'Default browser' selected. The main content area is titled 'Default browser' and shows 'Microsoft Edge is your default browser'. Below this is the 'Internet Explorer compatibility' section, which includes a heading 'Make legacy sites work in Microsoft Edge' and a description: 'Are you facing issues in opening legacy sites? With Internet Explorer mode, you can open legacy sites in Microsoft Edge. Select **Add** under **Internet Explorer mode pages** to add any legacy site to list of sites that will open automatically in Internet Explorer mode.' There are three settings cards: 1. 'Let Internet Explorer open sites in Microsoft Edge' with a dropdown set to 'Always (Recommended)'. 2. 'Allow sites to be reloaded in Internet Explorer mode (IE mode)' with a dropdown set to 'Allow' and a 'Restart' button. 3. 'Internet Explorer mode pages' with an 'Add' button and a note: 'These pages will open in Internet Explorer mode for 30 days from the date you add the page. No pages have been added to the Internet Explorer mode list yet.'